



# INSTALLATION GUIDE

*BE-KIAOPTG3-VSW104 B.O.O.S.T.  
Series Bass Enclosure for the  
2011-2015 Kia Optima*

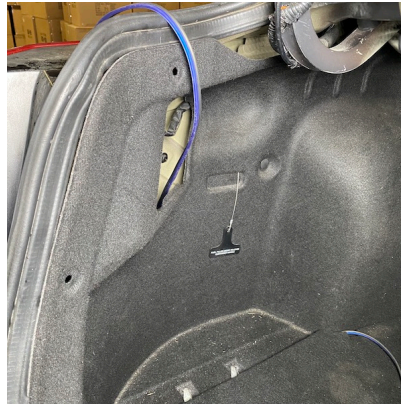
### Step 1

Lift, then fold carpet to expose (2) phillips screws on drivers side, then remove.



### Step 2

Run speaker wire to desired location. This will connect your subwoofer to the amp. We chose to run it behind the carpet.



### Step 3

Connect subwoofer wires to the connection terminal on your BOOST box. We generally use blue for positive (red) grey for negative (black).



### Step 4

Remove the 8 4mm allen key screws from the subwoofer enclosure, then remove the subwoofer from the enclosure.



### Step 5

Place BOOST enclosure into position on the drivers side. Make sure the bottom holes line up with the holes in the trunk floor.



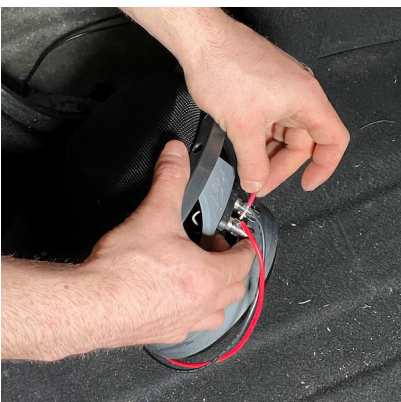
### Step 6

Take included hardware and secure the BOOST box into the trunk using the factory screw location as seen in step 1.



### Step 7

Wire the subwoofer in parallel for a final impedance of 2-Ohms. Red wire goes to the red terminal and the black wire goes to the black terminal.



### Step 8

Load the subwoofer back into the enclosure. Fasten the 8 allen bolts. Now it's time to enjoy you're new BE-KIAOPTG3-VSW104!



We recommend the installation of the NVX BE-KIAOPTG3-VSW104 to be performed by a professional that will have the skills and tools to ensure the job is done correctly. Please follow the steps above to get the best performance out of the BE-KIAOPTG3-VSW104. Installing and mounting NVX BE-KIAOPTG3-VSW104 improperly can present a serious safety hazard in the event of a collision. If you have any questions regarding installation of this product or an amplifier in this vehicle please feel free to contact NVX directly for further guidance and installation techniques.

## Included Hardware

(2) Teks- Self Drilling Roofing Screws, #12 2"

