

USER'S MANUAL



PATV65RGB

BLUETOOTH® | ALL-TERRAIN SOUND SYSTEM
FEATURING BUILT-IN AMPLIFIER,
FRONT-RGB & REAR-LED ILLUMINATION,
6.5" MARINE SPEAKERS AND
1.5" WATERPROOF TWEETERS



Planet Audio®

Thank you for purchasing this



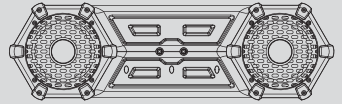
PATV65RGB Bluetooth All-Terrain Sound System

Please read through these instructions carefully so you will know how to operate your model properly.

After you have finished reading the instructions, keep this document in a safe place for future reference.

THIS PACKAGE CONTAINS

1 - PATV65RGB All-Terrain Speaker System



1 - LED RF Controller



1 - Quick Release Power Adapter



4 - Hi-strength Nylon Mounting Straps



1 - User Manual



1 - Warranty Card



All trademarks and trade names are those of their respective owners.



TABLE OF CONTENTS

BEFORE YOU START	2
<i>IMPORTANT SAFETY PRECAUTIONS</i>	
<i>INSTALLATION PRECAUTIONS</i>	
BEFORE INSTALLING THIS PRODUCT	3
<i>TECHNICAL SUPPORT</i>	
WIRE DIAGRAM	4
SPEAKER MOUNTING SUGGESTIONS	4
BLUETOOTH OPERATION	5
RGB FUNCTION CONTROLLER	6
INFORMATION TO THE USER	7
TROUBLESHOOTING GUIDE	8
SPECIFICATIONS	8

All rights reserved. No part of this publication may be reproduced, distributed, or transmitted in any form or by any means, including photocopying, recording, or other electronic or mechanical methods, without the prior written permission of PLANET AUDIO.

Copyright © 2020 PLANET AUDIO



BEFORE YOU START

IMPORTANT SAFETY PRECAUTIONS

- BE SURE TO OBSERVE THE FOLLOWING GUIDELINES:
 - Do not turn up the volume so high that you can't hear what's around you.
 - Use caution or temporarily discontinue use in potentially hazardous situations.
- Do not operate mobile video equipment while driving a motorized vehicle – safe driving and safety consideration of others should always be your highest priority.
- Set your volume control at a low setting, then slowly increase the sound until you can hear it comfortably without distortion, or ear discomfort.
- In the event you should notice smoke, strange noises or odor from this product, or any other abnormal signs, immediately turn off the power and consult your dealer or the nearest authorized **PLANET AUDIO** Service Center. Using this product in this condition may result in permanent damage to the system.

INSTALLATION PRECAUTIONS

WARNING - Always consult with a professional installer

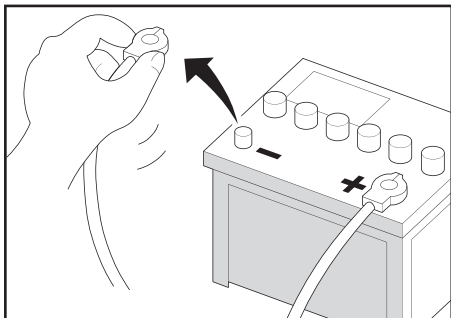
- Professional installation recommended. Do not attempt to service this product by yourself. Servicing of this product by persons without professional training and experience in electronic equipment and motorized vehicle accessories may be dangerous and could expose you to the risk of electric shock, injury or other hazards. Contact Planet Audio for any installation, service questions or requests.
- Refer any repairs to a qualified **PLANET AUDIO** Service Center
- The **PATV65RGB** should be powered directly to a vehicles battery
- When wiring directly to the vehicles battery, be sure to disconnect the batteries negative terminal wire before starting any wiring procedures, if extending the main power wire, it is suggested that an optional fuse and fuse holder (not included) with minimum rating of **20 Amperes** be in-line with the positive battery terminal
- The ground cable length should not exceed 18-inches (See wiring diagram pg 4)
- The **PATV65RGB** has a weather resistant design, it should not be submerged in or under water under any circumstances
- Use only the installation parts provided with the **PATV65RGB**



CAUTION!! Using other mounting methods may void this warranty

BEFORE INSTALLING THIS PRODUCT

ENGLISH



To avoid potential shorts in the electrical system, be sure to disconnect the (-) battery cable before installation. Use this unit with a 12-volt battery and negative grounding only. Failure to do so may result in a fire or malfunction.



When replacing the fuse, be sure to only use a fuse of the rating specified on this product.

To avoid short-circuiting, cover any disconnected leads with insulating tape. It is especially important to insulate any unused wires, which if left uncovered may cause a short circuit. When connecting other devices to this product, refer to the manual for the product to be connected. The black cable is ground, make sure to connect the ground wire first.

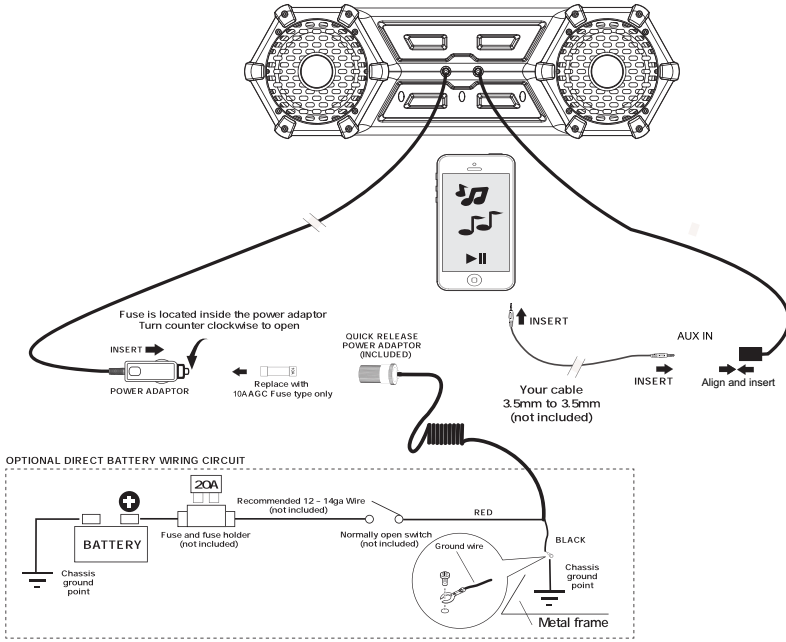
Ensure that the ground cable is properly connected to metal parts of the vehicles body frame or direct to the battery if your vehicle does not have a grounded chassis frame. The ground cable of this units power amp and a second powered system must be connected to the frame separately with different screws. If the screw for the ground wire loosens or falls out, it could result in fire or malfunction.

TECHNICAL SUPPORT

1.805.751.4854

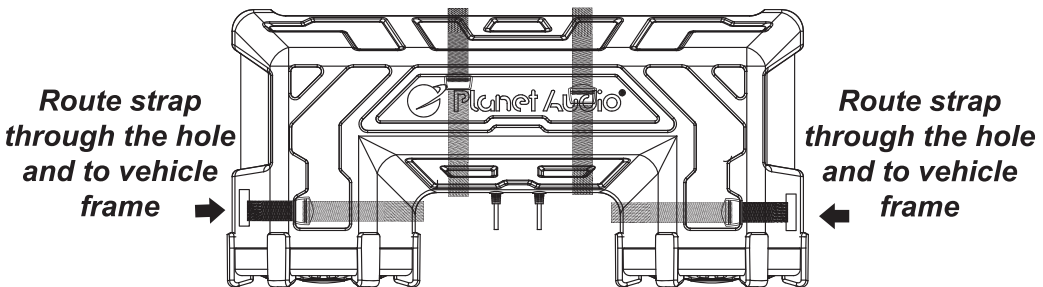
www.planetaudio.com/technical-support

WIRE DIAGRAM



SPEAKER MOUNTING SUGGESTIONS

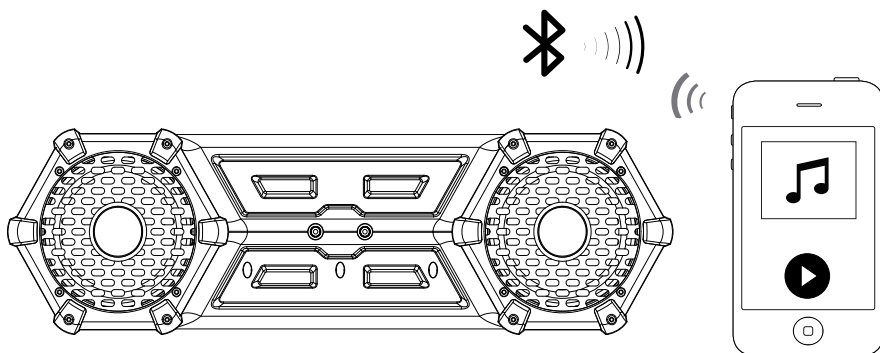
**Route strap
around the speaker body to vehicle frame**



CAUTION!!



Mounting straps should be double checked to be sure they are pulled tight and secure before each use of the vehicle.



PAIRING & DISCOVERING A NEW BLUETOOTH CONNECTION

ANDROID users:

- Go into the **Settings Menu** of your device
- Enter the **Bluetooth Menu** and press **SCAN**
- "Planet Audio ATV"** will now be display under **AVAILABLE DEVICES**
- If prompted, enter passcode: **"0000"**

iOS users:

- Go into the **Settings Menu** of your **iOS** device
- Enter the **Bluetooth Menu**
- "Planet Audio ATV"** will now be displayed
- If prompted, enter passcode: **"0000"**

- 1) If **Planet Audio ATV** is not seen, repeat the above steps to refresh the **"Device List"**
- 2) When the connection is successful the **BLUE LED** will be **ON**, you are now ready to stream music from your devices favorite media player to the **PATV65RGB**



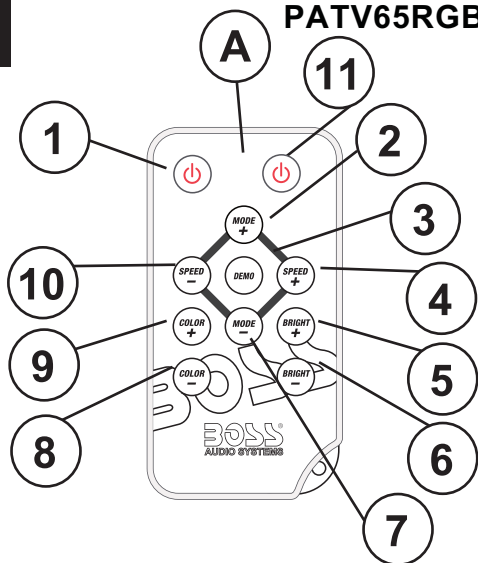
Tips:

To avoid battery exhaustion be sure to run the vehicles engine while using this product. Using this product without running the engine can drain the battery.

RGB FUNCTION CONTROLLER

ENGLISH

GETTING TO KNOW YOUR PATV65RGB LED RF CONTROLLER



USING THE REMOTE CONTROLLER

- When use for the first time, pull out the film protruding the tray
- RF controller range: Up to 25ft (LoS)
- Do not obstruct the RF remote with metal
- Always keep away from small children
- Do not store in direct sunlight
- Do not submerge in mud and/or water

INSTALLING THE BATTERY

- Slide the tray out on back of the remote control and insert battery with the (+) and minus (-) poles pointing in the proper direction

A RF CONTROLLER

1 RGB ON/OFF

2 MODE UP

3 AUTO DEMO (LONG PRESS FOR SINGLE COLOR MODE)

4 SPEED UP

5 BRIGHTNESS UP

6 BRIGHTNESS DOWN

7 MODE DOWN

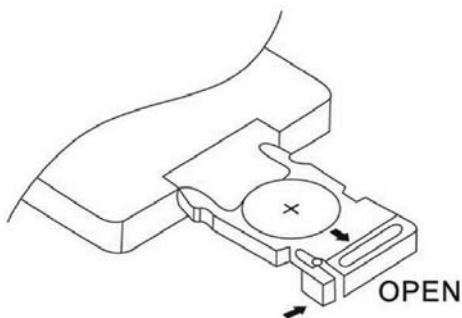
8 COLOR DOWN

9 COLOR UP

10 SPEED DOWN

11 LIGHT BAR ON/OFF

6



REPLACEMENT BATTERY-CR2025



Planet Audio®

INFORMATION TO THE USER

FCC COMPLIANCE STATEMENT

This device complies with part 15 of the FCC Rules. Operation is subject to the following two conditions:

- (1) this device may not cause interference, and
- (2) this device must accept any interference, including interference that may cause undesired operation of this device.

This transmitter must not be co-located or operated in conjunction with any other antenna or transmitter. The Bluetooth antenna cannot be removed (or replaced) by user. This equipment complies with FCC/ IC radiation exposure limits set forth for an uncontrolled environment and meets the FCC radio frequency (RF) Exposure Guidelines and RSS-102 of the IC radio frequency (RF) Exposure rules. This equipment has very low levels of RF energy that it deemed to comply without maximum permissive exposure evaluation (MPE). But it is desirable that it should be installed and operated keeping the radiator at least 20 cm or more away from person's body (excluding extremities: hands, wrists, feet and ankles). Alteration or modifications carried out without appropriate authorization may invalidate the user's right to operate the equipment.

NOTE: This equipment has been tested and found to comply with the limits for a Class B digital device, pursuant to Part 15 of the FCC Rules. These limits are designed to provide reasonable protection against harmful interference in a residential installation. This equipment generates, uses and can radiate radio frequency energy and, if not installed and used in accordance with the instructions, may cause harmful interference to radio communications. However, there is no guarantee that interference will not occur in a particular installation. If this equipment does cause harmful interference to radio or television reception, which can be determined by turning the equipment off and on, the user is encouraged to try to correct the interference by one or more of the following measures:

- ☐ Relocate or reorient the receiving antenna.
- ☐ Increase the separation between the equipment and receiver.
- ☐ Connect the equipment into an outlet on a circuit different from that to which the receiver is connected.
- ☐ Consult the dealer or an experienced radio/TV technician for help.



CAUTION!!

**ADJUSTMENT OR ALTERATIONS OF THIS DEVICE MAY RESULT
IN HAZARDOUS RADIATION EXPOSURE.**

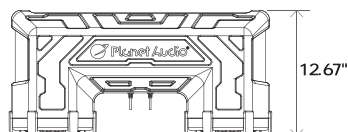
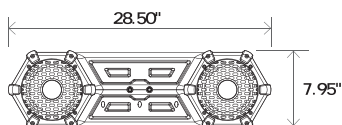


Planet Audio®

TROUBLESHOOTING GUIDE

TROUBLE	CAUSE	SOLUTION
Unit will not turn on	The fuse is blown	Check / replace the fuse
	Bad accessory power connection	Check accessory power port for proper operational voltage
No sound is heard	Blown speaker	Replace faulty speaker
	Volume is low / muted	Press the volume level up
	Device is paused or muted	Check your devices playing / volume status
Cannot pair Bluetooth	The Bluetooth function of the device is not enabled	Refer to the user manual of the device for how to enable the Bluetooth function
	The PATV65RGB memory is full	Turn off the last paired device BLUETOOTH
The audio quality is poor after connection with a Bluetooth enabled device	The Bluetooth reception is poor	Move the device closer to the audio system or remove any obstacle between the device and the systems antenna
Unit has become unresponsive	Power glitch or interference	Disconnect power for 10 seconds to reset

SPECIFICATIONS



BLUETOOTH

- Version: 3.0+ / EDR
- A2DP
- Range: 33ft (10m) Class 2

SPEAKERS

- Dimensions: 6.5"
- Impedance: 4Ω
- Cone Type: PP CARBON + RUBBER SURROUND
- Tweeter Size: 1" PEI SOFT DOME

AMPLIFIER

- Input impedance: 10kΩ
- Frequency Response: 45Hz-25kHz

CHASSIS

- Weight: 14.5lbs / 6.58Kg
- Unit Dimensions cm HxDxW: 20.2 x 32.2 x 72.4
- Unit Dimensions Inches HxDxW: 7.95 x 12.67 x 28.50
- Quick Release Power Adapter

GENERAL

- Operational Power: 14.4VDC (10.8V ~ 16V allowable)
- Grounding System: Negative type
- MAX Current Draw: 13.7A
- Replacement Fuse: 10A AGC TYPE
- 3-way protection circuitry (thermal, overload, and speaker short protection)
- Color: Black
- Storage Temperature: 5°F to 158°F / -15°C to 70°C
- Operation Temperature: 14°F to 140°F / -10°C to 60°C

SPECIFICATIONS SUBJECT TO CHANGE WITHOUT NOTICE



Planet Audio®

USER'S MANUAL

PATV65RGB

BLUETOOTH® | ALL-TERRAIN SOUND SYSTEM

www.planetaudio.com

TELEPHONE

805-751-4854 Customer Service

TECHNICAL SUPPORT

www.planetaudio.com/support



0420

iPod® is a trademark of Apple, Inc. registered in the U.S. and other countries.
Planet Audio is not affiliated with Apple, Inc.

The Bluetooth® word mark and logos are registered trademarks owned by Bluetooth SIG, Inc. and any use of such marks by Planet Audio is under license. Other trademarks and trade names are those of their respective owners.