



Stealthbox®

INSTALLATION GUIDE
for the

SB-CAN-MVCM1/10TW3

SKU# 94623

**2015 & Up CanAm Commander, Commander Max,
Maverick X, & Maverick Max**

Enclosure Type: Sealed

Driver Type: 10TW3-D4

Nominal Impedance: 2 ohms

Continuous Power Handling: 400 watts (RMS method)

! IMPORTANT

If you choose to perform the installation yourself, it is absolutely vital that the Stealthbox® be properly mounted to the vehicle according to these instructions. Failure to mount the enclosure properly presents two problems:

- 1) The sub-bass performance will suffer due to the movement of the enclosure caused by the force exerted by the woofer(s).
- 2) A loose enclosure presents a serious safety hazard in the event of a collision or sudden deceleration.

INSTALLATION
DIFFICULTY:

2 OUT OF **5**

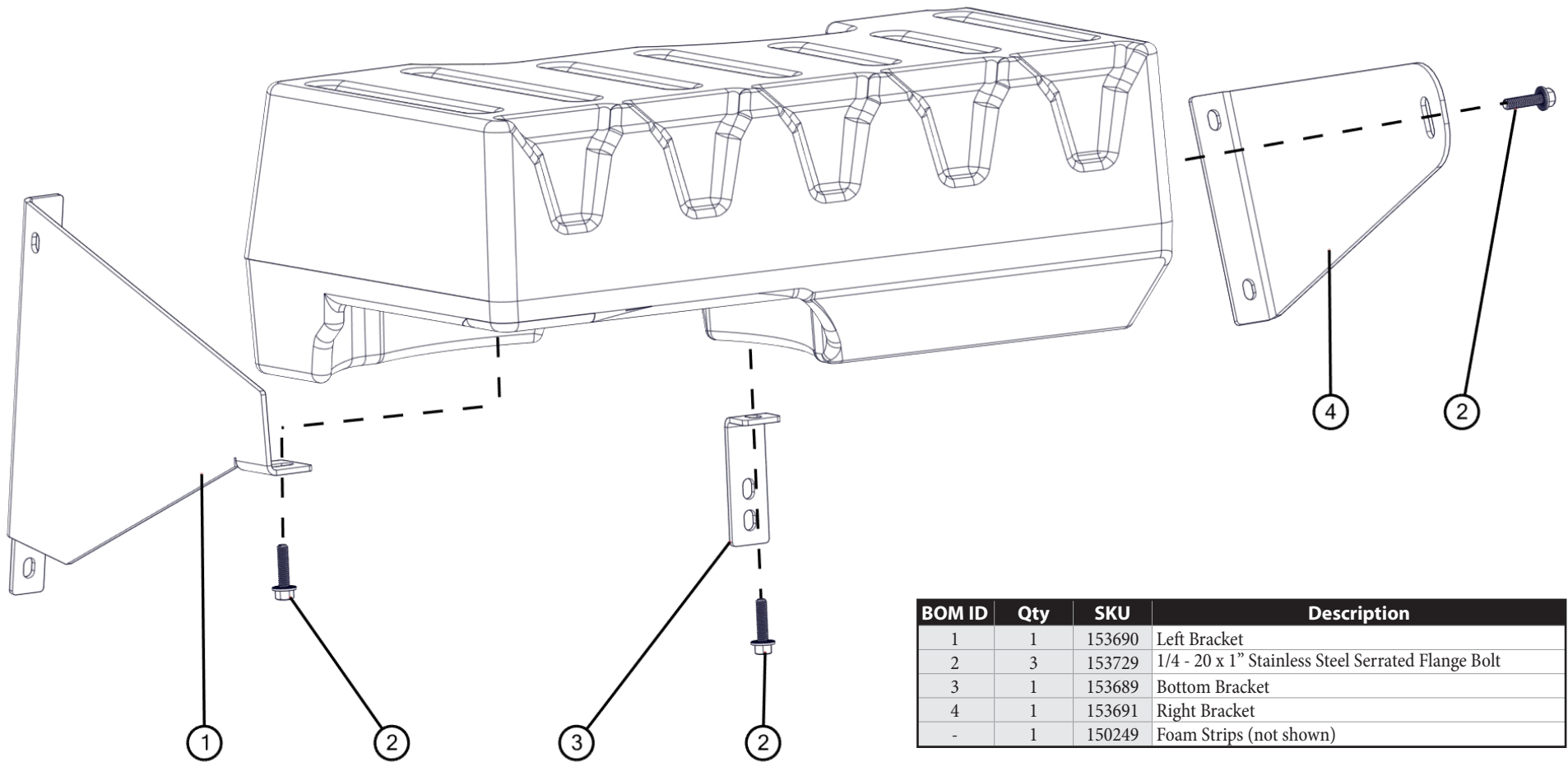
ESTIMATED TIME:
1-2 HOURS



Thank you for choosing a JL Audio Stealthbox® for your automotive sound system. With proper installation, your new vehicle-specific enclosed subwoofer system will deliver years of listening pleasure.

We strongly recommend that you have your new Stealthbox® installed by your authorized JL Audio dealer. The installation professionals employed by your dealer have the necessary tools and experience to disassemble and reassemble your vehicle properly. If you prefer to perform your own installation, please read this installation guide completely before beginning the process.

INCLUDED HARDWARE

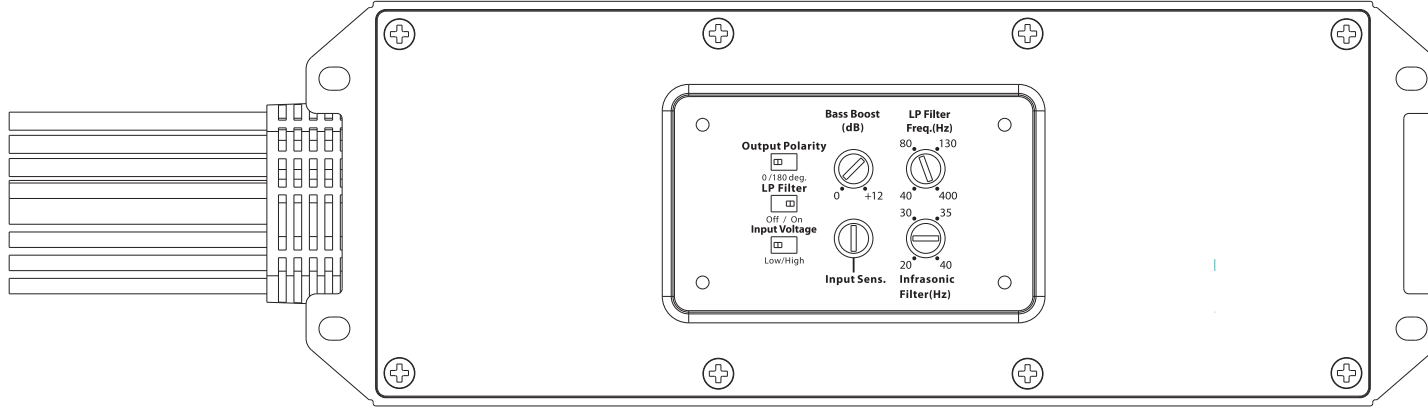


BOM ID	Qty	SKU	Description
1	1	153690	Left Bracket
2	3	153729	1/4 - 20 x 1" Stainless Steel Serrated Flange Bolt
3	1	153689	Bottom Bracket
4	1	153691	Right Bracket
-	1	150249	Foam Strips (not shown)

Note: For optimum performance, JL Audio recommends applying the included Foam Strips (or sound damping material) to surrounding plastic panels to reduce unwanted vibrations.

POWER RECOMMENDATION

JL Audio recommends high quality amplifiers such as the JL Audio MX300/1. The diagram below shows the recommended crossover settings for the MX300/1. For a detailed description of the amplifier settings, consult the owner's manual for the amplifier. If another amplifier is being used, please reference this illustration and use similar settings on that amplifier.



CONNECTIONS

Using quality power, signal, and speaker wire is essential in ensuring the performance of your Stealthbox®. JL Audio recommends using an 8 AWG power kit such as the XD-PCS8-1B for your Stealthbox® amplifier. Other kits are available should you be using more than one amplifier. Signal wire such as the JL Audio Premium Audio Interconnect Cables should be used to provide signal for both channels of the amplifier. JL Audio recommends using 12AWG speaker wire for subwoofers such as the XC-BCS12-25.



STEP 1

Empty the passenger side of the vehicle.



STEP 2

Open the glove compartment and fold the door down.



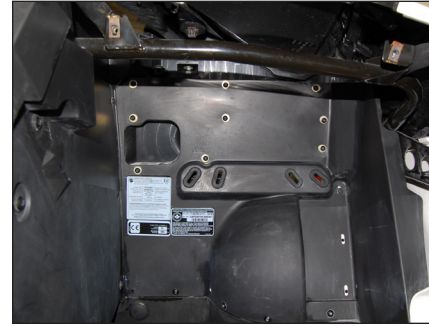
STEP 3

Carefully unclip the plastic trim panel above the glove compartment, and remove the panel from the vehicle.



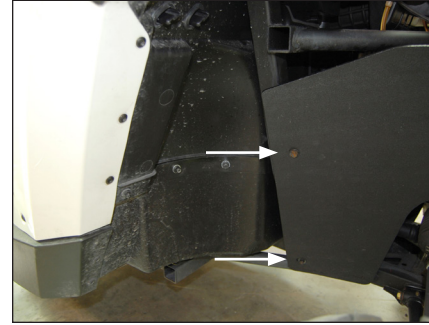
STEP 4

Remove the two factory bolts above the glove compartment.



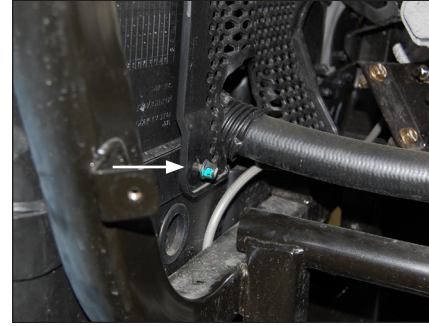
STEP 5

Remove the glove compartment from the vehicle.



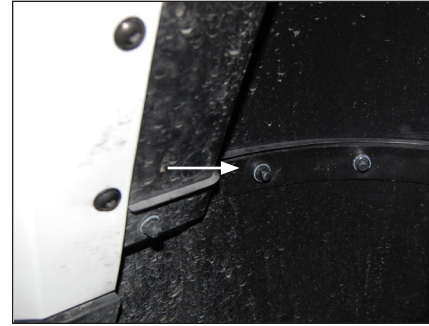
STEP 6

From behind the right front tire, remove the two indicated factory bolts, and pull back the plastic panel.



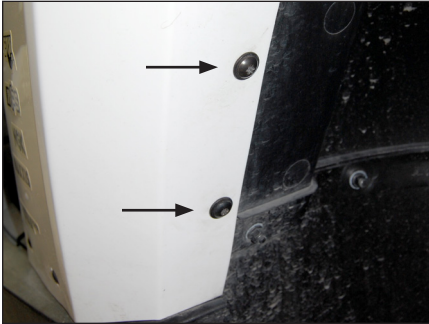
STEP 7

Behind the plastic panel, remove the indicated factory nut. This nut and accompanying bolt will be used to secure the Left Bracket in **Step 10**.



STEP 8

Remove the indicated factory nut. This nut and accompanying bolt will be used to secure the Bottom Bracket in **Step 15**.



STEP 9

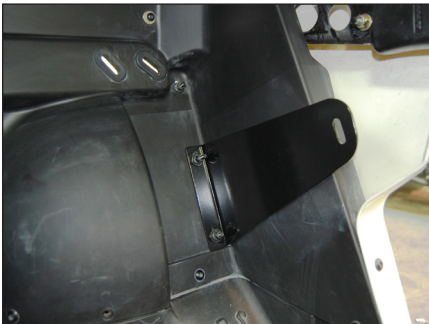
Remove the two indicated factory bolts. These bolts and accompanying nuts will be used to secure the Right Bracket in **Step 11**.



STEP 10

From inside the vehicle, remove the indicated, upper factory bolt, and use it to secure the top of the Left Bracket to the vehicle as shown.

Secure the bottom of the Left Bracket using the factory bolt and nut removed in **Step 7**.



STEP 11

Secure the Right Bracket to the vehicle using the factory nuts and bolts removed in **Step 9**.



STEP 12

Connect speaker cable to the barrier strip on the Stealthbox®, and slide the enclosure into place over the Left Bracket.



STEP 13

Thread a supplied 1/4 - 20 x 1" Stainless Steel Serrated Flange Bolt through the slotted hole in the Right Bracket, into the threaded insert on the side of the enclosure, and hand tighten.



STEP 14

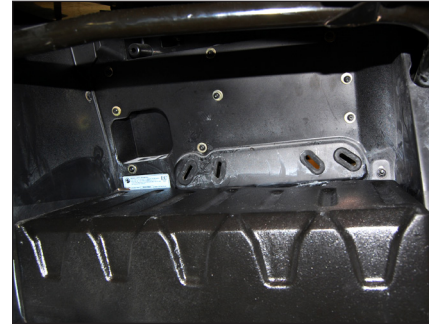
Thread a supplied 1/4 - 20 x 1" Stainless Steel Serrated Flange Bolt through the hole in the Left Bracket, into the threaded insert on the bottom of the enclosure, and hand tighten.



STEP 15

Secure the Bottom Bracket to the vehicle using the factory bolt and nut removed in **Step 8**.

Thread a 1/4 - 20 x 1" Stainless Steel Serrated Flange Bolt through the hole in the Bottom Bracket, into the threaded insert on the bottom of the enclosure, and hand tighten.



STEP 16

Fully tighten all three 1/4 - 20 x 1" Stainless Steel Serrated Flange Bolts.

Route speaker cable as necessary.



STEP 17

Reinstall the glove compartment using the factory bolts removed in **Step 4**.



STEP 18

Reinstall the plastic trim panel above the glove compartment.

Note: For optimum performance, we recommend applying the included Foam Strips (or sound damping material) to surrounding plastic panels to reduce unwanted vibrations.

CONGRATULATIONS!

You have completed the installation for this model! Enjoy your new Stealthbox®!



MID/HIGH FREQUENCY DRIVER FITMENT

VeX™ Enclosed Speaker Systems are ideal for powersports and off-road vehicle applications. Each weatherproof pod can be mounted to a roll cage precisely aimed for optimum sound. Mounting fixtures are available to fit a variety of roll cage diameters.



JL AUDIO® | How we play.®    

(954) 443-1100

www.jlaudio.com

All specifications are subject to change without notice. "JL Audio" and the JL Audio logo, and "Stealthbox" and the Stealthbox logo are registered trademarks of JL Audio, Inc. "Ahead of the Curve", its respective logo, and "How we play" are trademarks of JL Audio, Inc.
Printed in USA • ©2016 JL Audio, Inc. • For more detailed information please visit us online at www.jlaudio.com.

JLA-SKU# 011450 • ver. 09.16.2016 • 10369 NORTH COMMERCE PARKWAY • MIRAMAR, FLORIDA • 33025 • USA