



Stealthbox®

INSTALLATION GUIDE
for the

SB-KW-TRX4/10TW3

SKU# 94624

2015 & Up Kawasaki Teryx 4

Enclosure Type: Sealed

Driver Type: 10TW3-D4

Nominal Impedance: 2 ohms

Continuous Power Handling: 400 watts (RMS method)

SB-KW-TRX4/10TW3 INSTR_SKU# 011451

! IMPORTANT

If you choose to perform the installation yourself, it is absolutely vital that the Stealthbox® be properly mounted to the vehicle according to these instructions. Failure to mount the enclosure properly presents two problems:

- 1) The sub-bass performance will suffer due to the movement of the enclosure caused by the force exerted by the woofer(s).
- 2) A loose enclosure presents a serious safety hazard in the event of a collision or sudden deceleration.

INSTALLATION
DIFFICULTY:

2 OUT OF 5

ESTIMATED TIME:
1 HOUR

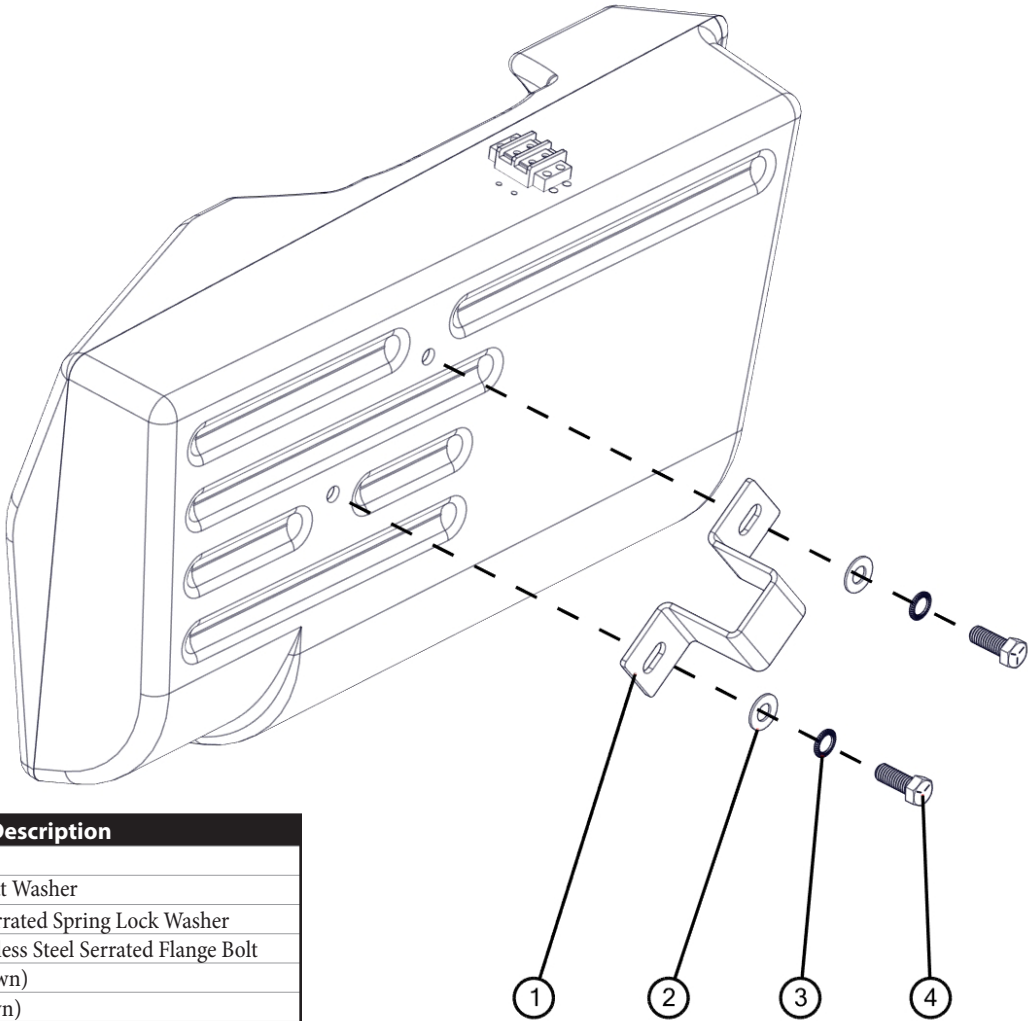


*Thank you for choosing a JL Audio Stealthbox® for your automotive sound system.
With proper installation, your new vehicle-specific enclosed subwoofer system
will deliver years of listening pleasure.*

*We strongly recommend that you have your new Stealthbox® installed by your
authorized JL Audio dealer. The installation professionals employed by your
dealer have the necessary tools and experience to disassemble and reassemble
your vehicle properly. If you prefer to perform your own installation, please read
this installation guide completely before beginning the process.*

Continued on Next Page

INCLUDED HARDWARE

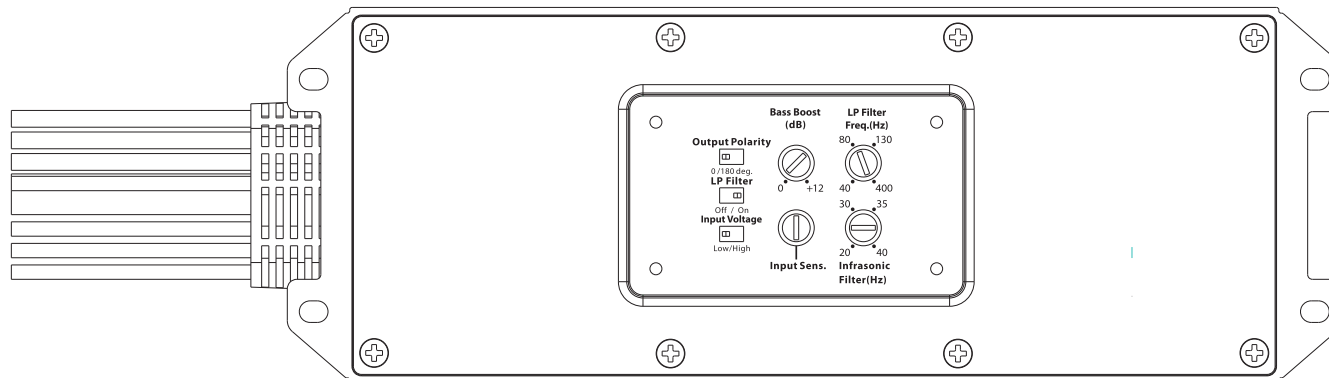


BOM ID	Qty	SKU	Description
1	1	153693	Bracket
2	2	153737	3/8" Stainless Steel Flat Washer
3	2	153731	3/8" Stainless Steel Serrated Spring Lock Washer
4	2	153730	3/8 - 16 x 1-1/4" Stainless Steel Serrated Flange Bolt
-	2	151345	Wax Squares (not shown)
-	2	150249	Foam Strips (not shown)

Note: For optimum performance, JL Audio recommends applying the included Foam Strips (or sound damping material) to surrounding plastic panels to reduce unwanted vibrations.

POWER RECOMMENDATION

JL Audio recommends high quality amplifiers such as the JL Audio MX300/1. The diagram below shows the recommended crossover settings for the MX300/1. For a detailed description of the amplifier settings, consult the owner's manual for the amplifier. If another amplifier is being used, please reference this illustration and use similar settings on that amplifier.

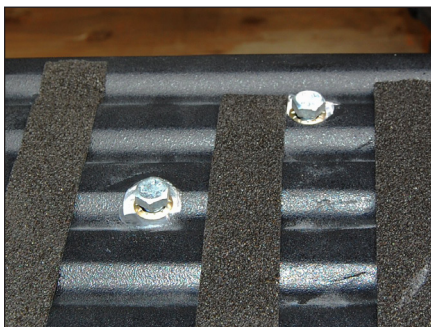


CONNECTIONS

Using quality power, signal, and speaker wire is essential in ensuring the performance of your Stealthbox®. JL Audio recommends using an 8 AWG power kit such as the XD-PCS8-1B for your Stealthbox® amplifier. Other kits are available should you be using more than one amplifier. Signal wire such as the JL Audio Premium Audio Interconnect Cables should be used to provide signal for both channels of the amplifier. JL Audio recommends using 12AWG speaker wire for subwoofers such as the XC-BCS12-25.

**STEP 1**

Attach Foam Strips from one of the included sheets to the rear and bottom of the Stealthbox®, evenly spaced, as shown.

**STEP 2**

Thread the supplied 3/8 - 16 x 1" Serrated Flange Bolts into the two threaded inserts on the back of the Stealthbox®, and hand tighten.

**STEP 3**

Temporarily place the Stealthbox® on the floor behind the driver's seat to determine where the 3/8 - 16 x 1" Serrated Flange Bolts meet the rear panel.

Remove the Stealthbox®, and position the Wax Squares on the panel at the bolt locations. Put the Stealthbox® back in position, pressing firmly against the enclosure to leave bolt impressions on the Wax Squares.

**STEP 4**

Remove the Stealthbox® once more, leaving the Wax Squares in place. Using a 3/8" drill bit, drill a hole through the rear panel on each of the impressions.

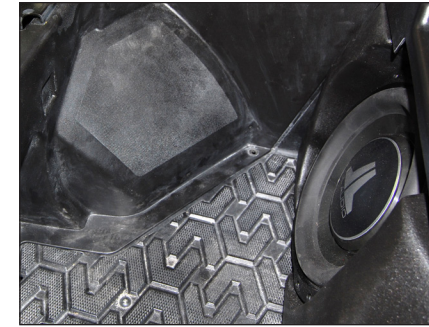
Before drilling, always make sure that you are not going to be drilling into any gas lines, brake lines, tires, transmission lines, electrical wiring, exhaust systems or any other critical system.

**STEP 5**

Connect speaker cable to the barrier strip on the enclosure. Put the Stealthbox® back into position.

**STEP 6**

From the backside of the rear panel, position the Bracket around the frame. Slide a 3/8" Serrated Spring Lock Washer and a 3/8" Flat Washer over each of the 3/8 - 16 x 1" Serrated Flange Bolts, thread the assemblies through the holes in the Bracket and rear panel, into the threaded inserts on the back of the Stealthbox®, and fully tighten.

**STEP 7**

Route speaker cable as necessary.

Note: For optimum performance, we recommend applying Foam Strips from the remaining sheet (or sound damping material) to surrounding plastic panels to reduce unwanted vibrations.

CONGRATULATIONS!

You have completed the installation for this model! Enjoy your new Stealthbox®!

**MID/HIGH FREQUENCY DRIVER FITMENT**

VeX™ Enclosed Speaker Systems are ideal for powersports and off-road vehicle applications. Each weatherproof pod can be mounted to a roll cage precisely aimed for optimum sound. Mounting fixtures are available to fit a variety of roll cage diameters.



JL AUDIO® | How we play.®    

(954) 443-1100

www.jlaudio.com

All specifications are subject to change without notice. "JL Audio" and the JL Audio logo, and "Stealthbox" and the Stealthbox logo are registered trademarks of JL Audio, Inc. "Ahead of the Curve," its respective logo, and "How we play" are trademarks of JL Audio, Inc.
Printed in USA • ©2016 JL Audio, Inc. • For more detailed information please visit us online at www.jlaudio.com.

JLA-SKU# 011451 • ver. 09.16.2016 • 10369 NORTH COMMERCE PARKWAY • MIRAMAR, FLORIDA • 33025 • USA