



# SlamPak™

INSTALLATION GUIDE

for the

**SLPK-YA-FXC-SG-TB.r2**

SKU# 91168

&

**SLPK-YA-FXC-SG-WH.r2**

SKU# 91169

2013-2018 Yamaha FX

## ! IMPORTANT

If you choose to perform the installation yourself, it is absolutely vital that the SlamPak™ be properly mounted to the vessel according to these instructions. Failure to mount the enclosures properly presents two problems:

- 1) A loose enclosure presents a serious safety hazard in the event of a collision, rollover, or sudden deceleration.
- 2) The sub-bass performance will suffer due to the movement of the enclosure caused by the force exerted by the woofer(s).

INSTALLATION  
DIFFICULTY:

**5** OUT OF **5**

ESTIMATED TIME:  
3-4 HOURS

*Thank you for choosing a JL Audio SlamPak™ for your marine sound system.  
With proper installation, your new marine audio sound system  
will deliver years of listening pleasure.*

*We strongly recommend that you have your new SlamPak™ installed by your  
authorized JL Audio dealer. The installation professionals employed by your  
dealer have the necessary tools and experience to disassemble and reassemble  
your vessel properly. If you prefer to perform your own installation, please read  
this installation guide completely before beginning the process.*

**INCLUDED HARDWARE****Hardware**

Qty	Description
11	1/4 - 20 x 1" Serrated Flange Head Bolt
11	1/4" Oversized Flat Washer
17	1/4" Flat Washer
13	1/4 - 20 Nylon Insert Locknut
5	1/4 - 20 Hex Cap Screw
1	1/4 - 20 Hex Nut
3	1/4" Split Lock Washer
4	#8 - 32 x 1/2" Pan Head Phillips Screw
4	#8 Split Washer
4	#8 Flat Washer
1	Liquid Tight Water Seal
2	3/8" Grommet
1	Template
1	Amplifier Bracket
1	Port Pod Bracket
1	Starboard Pod Bracket
2	Long L-Bracket
1	Short L-Bracket
10	11" Cable Tie
1	1-1/4" Foam Tape
1	Loctite® 263 Red Thread-Locking Compound
1	Loctite® 242 Blue Thread-Locking Compound
2	Gasket
1	Silicone Adhesive
2	2-Pin Female Receptacle
2	2-Pin Wedgelock
1	4-Pin Female Receptacle
1	4-Pin Wedgelock
4	Heat Shrink Tubing

**Equipment**

Qty	Description
1	MX500/4 Amplifier *
2	VeX Speaker Enclosures
1	M8W5 Subwoofer Enclosure
1	MBT-CRXv2 Bluetooth Controller
1	Power Harness
1	Amplifier Harness
1	1.5' 2 Channel RCA Interconnect
1	50A Circuit Breaker
1	Sport Grille Badges (pair)
2	Aluminum Logo Cap

\* NOTE: For optimum performance and reliability, all amplifier controls have been preset for this SlamPak™ and sealed beneath the control panel cover. No further adjustment is necessary.



**STEP 1**

Unlatch and remove the rear seat section from the vessel.



**STEP 2**

Remove the front seat section from the vessel.



**STEP 3**

Remove the under seat locker.



**STEP 4**

Unlatch and lift the lid.



**STEP 5**

Remove the five push clips from the lower access panel, and remove the panel.



**STEP 6**

The lower access panel has been removed.



**STEP 7**

Remove the four Torx screws from the top of the cluster shroud.



**STEP 8**

Remove the cluster shroud.

**STEP 9**

Using a 10mm socket and wrench or driver, remove the two bolts from the top of the upper access panel.

**STEP 10**

Using a 10mm socket and wrench, remove the two bolts from the bottom of the upper access panel by reaching through the lower access point, as shown.

**STEP 11**

Remove the upper access panel.

**STEP 12**

Pull up on the factory wire grommet, then unclip and loosen the factory cable tie.

**STEP 13**

Feed the ring terminal ends of the Power Harness down through the factory grommet, leaving approximately 24" of the harness above the grommet. Tighten the factory cable tie, and push the grommet back into place.

**STEP 14**

Route the Power Harness toward the starboard side of the vessel. Use cable ties to secure the Power Harness to the factory wiring.

**STEP 15**

Continue to route the Power Harness toward the battery, passing it through the opening in the firewall. Use cable ties to secure the Power Harness to the factory wiring.

**STEP 16**

Determine the installation location for the Circuit Breaker on the firewall. Using the Circuit Breaker as a template, mark the locations of the mounting holes.

Using a 1/4" drill bit, carefully drill through the marks.

Pictured is the Circuit Breaker mounting hardware already installed for reference.

**STEP 17**

Securely mount the Circuit Breaker to the firewall using a pair of 1/4 - 20 x 1" Hex Cap Screws with 1/4" Flat Washers from the front, and a pair of 1/4" Flat Washers and 1/4 - 20 Nylon Insert Locknuts from the back. Press the red button on the Circuit Breaker to disengage it. Connect the positive power wire to one side, the 8 AWG extension to the other side, then connect the ring terminals to their respective battery terminals, and fully tighten.

**STEP 18**

Open the storage compartment, and remove the foam from the bottom.

**STEP 19**

Using a 10mm socket and wrench or driver, remove a bolt from each side of the inside of the storage compartment. The same tool can be used in **Steps 20-22**.

**STEP 20**

Remove the bolt from the bottom of the left body panel.

**STEP 21**

Remove the bolt from the top of the left body panel.

**STEP 22**

Remove the bolt from the front of the left body panel, as well as the nut from the underside.

**STEP 23**

Unclip and remove the left body panel from the vessel.

**STEP 24**

Pictured is the vessel with the left body panel removed.

Repeat **Steps 20-23** for the right body panel.

**STEP 25**

Pictured is the thick round gasket included with the MBT-CRXv2 to illustrate the approximate location of the MBT-CRXv2 on the storage lid.

**STEP 26**

Cover the storage compartment lid with masking tape, and mark the center line.

**STEP 27**

Measure approximately 2-3/8" from the front of the storage compartment lid, and mark the pilot hole location on the center line made in the previous step.

**STEP 28**

Using a 1-1/8" hole saw, carefully cut a hole on the pilot hole location marked in the previous step.

**STEP 29**

Pictured is the storage compartment lid with the hole cut.

**STEP 30**

Add the thick round gasket to the controller, aligning the small hole in the gasket with the alignment pin on the back of the controller, and guide the MBT-CRXv2 wiring through the hole in the storage lid.

**STEP 31**

From the underside of the storage compartment lid, add the thin round gasket, then secure the MBT-CRXv2 using the threaded fastening collar.

Reference the illustration in the MBT-CRXv2 owner's manual for additional details.

**STEP 32**

Determine the location of the Liquid Tight Wire Seal on the left side of the storage compartment, and mark the center location.



**STEP 33**

Using a 1-1/8" hole saw, drill a hole in the storage compartment on the mark made in the previous step.



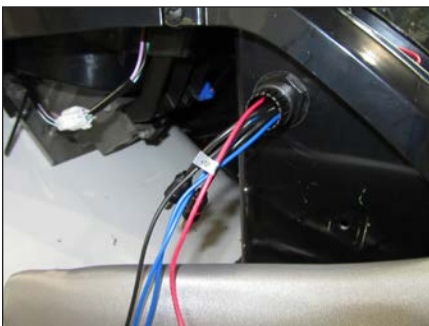
**STEP 34**

Insert the Liquid Tight Wire Seal into the hole drilled in the previous step, as shown.



**STEP 35**

Thread the seal nut over the Liquid Tight Wire Seal from the inside of the storage compartment, and fully tighten.



**STEP 36**

Pass the MBT-CRXv2 wiring through the Liquid Tight Wire Seal, as shown.



**STEP 37**

Pass the MBT-CRXv2 wiring through the seal collar, thread the seal collar onto the Liquid Tight Wire Seal, and firmly tighten.



**STEP 38**

Carefully cut Template A from the clear sheet along the INSIDE of the indicated line. Align Template A to the back of the left body panel as shown. Mark the center locations of the five holes using a pick tool or center punch.



**STEP 39**

Carefully remove Template A, and save it for the opposite side. Using a 1/8" drill bit, drill through each of the five marks made in the previous step.



**STEP 40**

Reinstall the left body panel.



**STEP 41**

Using a 1/8" drill bit, drill through each of the holes in the left body panel and through the left induction box.

Remove the left body panel.



**STEP 42**

Pictured is the left induction box with the holes drilled in the previous step.



**STEP 43**

Place a blanket or towel inside the hull, just below the left intake tube to prevent the backs of the rivets from falling into the hull after drilling them out in the following steps.



**STEP 44**

Use a center punch to tap in the center of the three rivets that hold the left induction box to the hull.



**STEP 45**

Pictured is a rivet after the center has been tapped in.



**STEP 46**

Apply masking tape below each of the rivets to help catch debris while drilling.

Using a 1/4" drill bit, carefully drill through the rivet head. Using a 13/64" drill bit, carefully drill through the rest of the rivet.



**STEP 47**

Repeat for the other two rivets, then remove the left induction box.



**STEP 48**

The left induction box has been removed.

**STEP 49**

Using a 1/4" drill bit, enlarge each of the rivet holes. Use caution as to not drill into any vital components inside the hull.

**STEP 50**

Using a 1/2" drill bit, enlarge each of the holes in the left induction box.

**STEP 51**

Pictured is the left induction box after the holes have been enlarged.

**STEP 52**

Using a step drill bit, enlarge each of the left induction box mounting holes to 1/4".

**STEP 53**

Remove the masking tape. Slide a 1/4" Oversized Flat Washer over each of three 1/4 - 20 x 1" Serrated Flange Head Bolts. From inside the hull, pass an assembly out through each of the holes enlarged in **Step 49**.

**STEP 54**

Align the mounting holes in the left induction box over the three 1/4 - 20 x 1" Serrated Flange Head Bolts as shown.

**STEP 55**

Align the mounting holes in the Port Pod Bracket over the three 1/4 - 20 x 1" Serrated Flange Head Bolts, as shown.

**STEP 56**

Slide a 1/4" Flat Washer and a 1/4 - 20 Nylon Insert Locknut over each 1/4 - 20 x 1" Serrated Flange Head Bolts, and firmly tighten.

**STEP 57**

Pictured is the Port Pod Bracket installed over the left induction box.

Repeat **Steps 38-56** with the Starboard Pod Bracket for the opposite side.

If vehicle is equipped with a manual reverse lever, additional hardware may need to be removed for access.

**STEP 58**

Carefully cut Template B from the clear sheet on the indicated line.

Lightly score the indicated line on Template B, then align it with the factory bracket, rivet, and grommet on the hull as shown. Mark the center location of the hole using a pick tool or center punch.

**STEP 59**

Remove Template B. Using a 1/4" drill bit, carefully drill through the mark made in the previous step. Use caution as to not drill into any vital components inside the hull.

**STEP 60**

Align the rear hole in the Amplifier Bracket, and temporarily hold it in position using a 1/4 - 20 x 1" Serrated Flange Bolt through the hole drilled in the previous step.

**STEP 61**

Align the notch in the front of the Amplifier Bracket with the lower leg of the Starboard Pod Bracket, as shown. Mark the location of the lower Amplifier Bracket mounting hole.

**STEP 62**

Remove the Amplifier Bracket. Using a 1/4" drill bit, carefully drill through the mark made in the previous step. Use caution as to not drill into any vital components inside the hull.

**STEP 63**

Pass a 1/4 - 20 x 1" Serrated Flange Head Bolt through the front mounting hole in the Amplifier Bracket. Thread a 1/4 - 20 Hex Nut over the 1/4 - 20 x 1" Serrated Flange Head Bolt, as shown, and firmly tighten.

Slide a 1/4" Flat Washer over the 1/4 - 20 x 1" Serrated Flange Head Bolt, after the 1/4 - 20 Hex Nut, as shown.

**STEP 64**

Slide the 1/4 - 20 x 1" Serrated Flange Head Bolt through the hole drilled in Step 62. From inside the hull, slide a 1/4" Oversized Flat Washer and a 1/4 - 20 Nylon Insert Locknut over the 1/4 - 20 x 1" Serrated Flange Head Bolt.

Repeat the process for the rear hole in the Amplifier Bracket shown in Step 60, then firmly tighten both sets of hardware.

**STEP 65**

Using a 10mm socket and wrench, reach inside the hull, and remove three nuts that secure the left accent panel, and remove the panel from the vessel.

**STEP 66**

Apply strips of Foam Tape on the subwoofer enclosure, as shown.

**STEP 67**

Carefully slide the subwoofer enclosure in place.

**STEP 68**

Slide a 1/4" Split Lock Washer and a 1/4" Flat Washer over a 1/4 - 20 x 1" Hex Cap Screw, and thread the assembly through the slot in a Long L-Bracket, into the threaded insert in the right rear of the subwoofer enclosure, as shown, and hand tighten.

**STEP 69**

Slide a 1/4" Split Lock Washer and a 1/4" Flat Washer over each of two 1/4 - 20 x 1" Hex Cap Screws. Thread one assembly through the slot in a Long L-Bracket, into the threaded insert in the left rear of the subwoofer enclosure, as shown, and hand tighten. Thread the other assembly through the slot in the Short L-Bracket, into the threaded insert in the left front of the subwoofer enclosure, as shown, and hand tighten.

**STEP 70**

Be sure the subwoofer enclosure is centered on the vessel. Align the two Long L-Brackets and one short L-Bracket with the hull, and mark each of the mounting hole locations.

**STEP 71**

Remove the subwoofer enclosure. Using a 1/4" drill bit, drill through each of the marks made in the previous step. Use caution as to not drill into any vital components inside the hull.

**STEP 72**

Slide a 1/4" Flat Washer over each of three 1/4 - 20 x 1" Serrated Flange Head Bolts, and drop one through each of the slots in the brackets, into the holes drilled in the previous step.

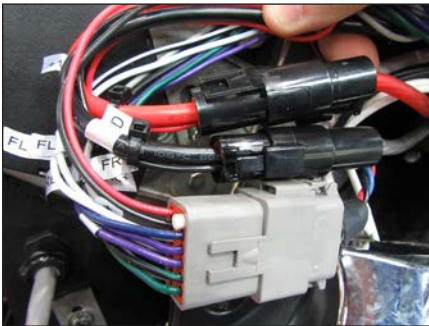
Remove the three 1/4 - 20 x 1" Hex Cap Screws from the enclosure, apply Loctite® 242 Blue Thread-Locking Compound to each, reinstall, and fully tighten.

**STEP 73**

From inside the hull, slide a 1/4" Oversized Flat Washer and a 1/4 - 20 Nylon Insert Locknut over one of the 1/4 - 20 x 1" Serrated Flange Head Bolts, and firmly tighten. Repeat the process for the other two 1/4 - 20 x 1" Serrated Flange Head Bolts.

**STEP 74**

Connect the harness exiting the subwoofer enclosure to the Amplifier Harness as shown, and secure with cable ties.

**STEP 75**

Connect the Power Harness and Amplifier Harness, as shown.

**STEP 76**

Slide a piece of Heat Shrink Tubing over each channel of the RCA interconnects, and connect the RCA interconnects to the outputs of the MBT-CRXv2. Position the Heat Shrink Tubing over the joined connections, and use a heat gun or torch to shrink the tubing.

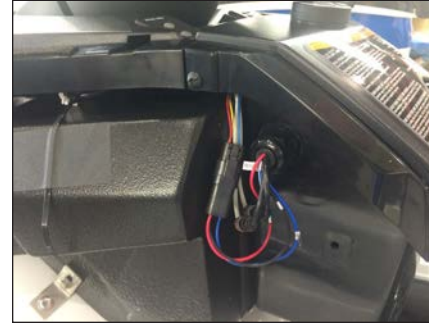
**STEP 77**

Insert the wires from the MBT-CRXv2 into the 4-Pin Female Receptacle by sliding each pin into the rear of the connector, as shown. Pay close attention to the wire colors and corresponding pin locations, as listed below:

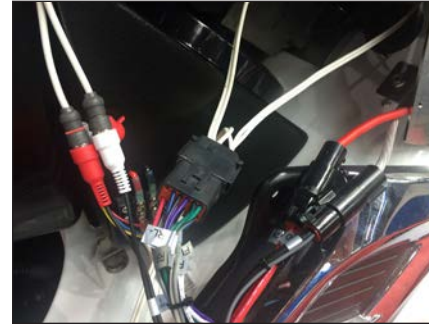
Pin 1 = Red	Pin 4 = Blue/White
Pin 2 = Black	Pin 3 = Blue

**STEP 78**

Secure the pins by inserting the Wedglock from the front of the 4-Pin Female Receptacle, as shown.

**STEP 79**

Secure the MBT-CRXv2 wiring with cable ties.

**STEP 80**

Using a utility knife, carefully cut the red and white protective caps from the Front Input jacks of the Amplifier Harness. Trim each cut flush with the plastic outer body of each RCA jack. Slide a piece of Heat Shrink Tubing over each channel of the RCA interconnects and connect to the Front Input jacks of the Amplifier Harness. Position the Heat Shrink Tubing over the joined connections, and use a heat gun or torch to shrink the tubing.



**STEP 81**

Slide a #8 Split Washer, then a #8 Flat Washer over each of the four 8 - 32 x 1/2" Pan Head Phillips Screws. Align the MX500/4 amplifier with the Amplifier Bracket, and secure using one screw assembly per mounting hole, as shown.



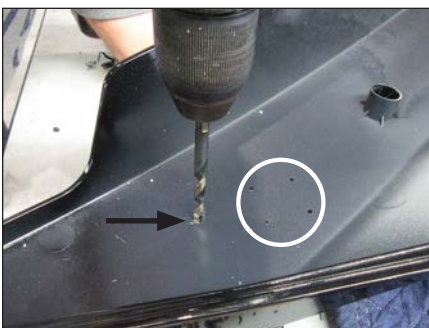
**STEP 82**

Secure the Amplifier Harness with cable ties.



**STEP 83**

Reinstall the left accent panel.



**STEP 84**

Using a 3/8" drill bit, enlarge the four speaker enclosure mounting holes and one speaker cable hole drilled in both body panels.



**STEP 85**

Align both body panels, but do not reinstall the factory hardware at this time.



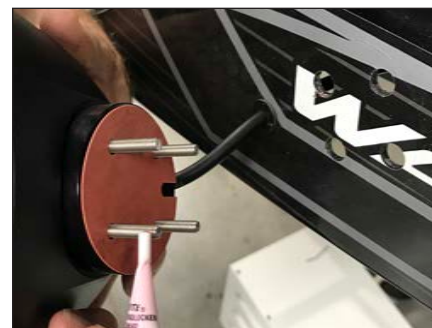
**STEP 86**

Using a Phillips head screwdriver, remove the two speaker mounting screws and washers, and remove the speaker from the enclosure.



**STEP 87**

Install a 3/8" Grommet into the speaker cable hole in the left body panel. Pass the speaker cable exiting the speaker enclosure through the 3/8" Grommet and through the hole drilled in the left induction box.



**STEP 88**

Align and attach the Gasket to the speaker enclosure.

Apply Loctite® 263 Red Thread-Locking Compound to each of the four pre-installed 10 - 32 x 2" Hex Drive Flat Head Screws on the speaker enclosure, then align them with the four speaker enclosure mounting holes in the left body panel.

**STEP 89**

Slide the pins from the speaker enclosure wires into the back of the 2-Pin Female Receptacle, as shown, paying close attention to the wire colors and pin locations.

From the front of the 2-Pin Female Receptacle, insert the Wedglock into place to secure the pins.

Connect to the Amplifier Harness, as shown.

**STEP 90**

Thread each of the 10 - 32 x 2" Hex Drive Flat Head Screws inside the speaker enclosure into each of the holes in the Port Pod Bracket behind the left body panel, and firmly tighten.

**STEP 91**

Reinstall the factory hardware for the left body panel.

**STEP 92**

Remove the adhesive backing from the JL Audio Logo Sport Grille Badge, and install the badge onto the speaker grille.

**STEP 93**

Reconnect and align the speaker, then reinstall the speaker mounting screws and washers.

**STEP 94**

Clean the inside of the Aluminum Cap with acetone. Apply a circular bead of silicone adhesive to the inside of the Aluminum Cap, about 1/2" from the outer edge. Align the Aluminum Cap to the desired angle, and press it onto the back of the enclosure. Apply masking tape to hold the cap in place until the silicone cures (at least 24 hours). Repeat **Steps 88-94** for the opposite side.

**STEP 95**

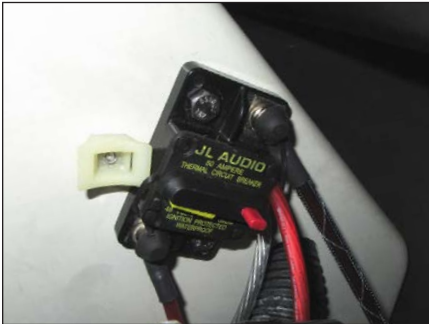
Reinstall the bolts into each side of the storage compartment.

**STEP 96**

Reinstall the upper access panel, then reinstall the lower access panel.



**STEP 97**  
Reinstall the cluster shroud.



**STEP 98**  
Press in on the yellow arm of the Circuit Breaker to engage it.



**STEP 99**  
Reinstall the under seat locker and both seat sections.  
  
Refer to the MBT-CRXv2 owner's manual to pair your mobile device.

**CONGRATULATIONS!**

You have completed the installation for this model! Enjoy your new SlamPak™!



**SPECIFICATIONS**

**SPEAKERS**

**Continuous Power Handling (RMS):** 60 watts  
**Nominal Impedance:** 4 ohms  
**Frequency Response:** 100 Hz - 25 kHz +/- 3 dB

**SUBWOOFER**

**Continuous Power Handling:** 200 watts  
**Nominal Impedance:** 4 ohms

**JL AUDIO** | How we play.®    

(954) 443-1100

[www.jlaudio.com](http://www.jlaudio.com)

All specifications are subject to change without notice. "JL Audio" and "How we play" are registered trademarks of JL Audio, Inc. "Ahead of the Curve" and its respective logo are trademarks of JL Audio, Inc.

Printed in USA • ©2020 JL Audio, Inc. • For more detailed information please visit us online at [www.jlaudio.com](http://www.jlaudio.com).

JLA-SKU# 011475 • ver. 07.15.2020 • 10369 NORTH COMMERCE PARKWAY • MIRAMAR, FLORIDA • 33025 • USA



\*011475\*